

Attachment 1 to FSN-RDS-CoreLab-2022-004 Version 1 Instructions for workarounds

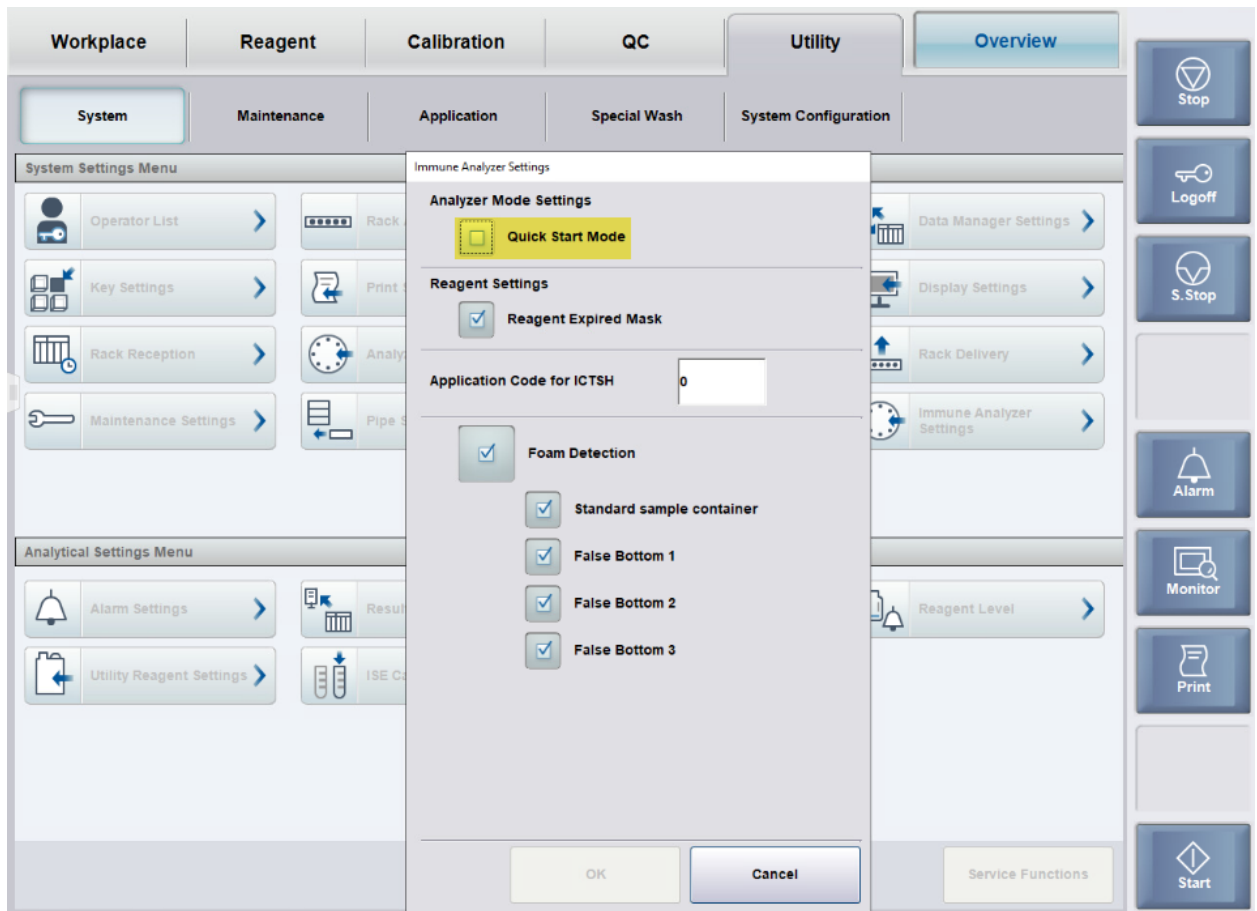


Please either deactivate Quick Start Mode (action 1 below), or perform additional maintenance under certain conditions (action 2 below).

1. Deactivate Quick Start Mode.

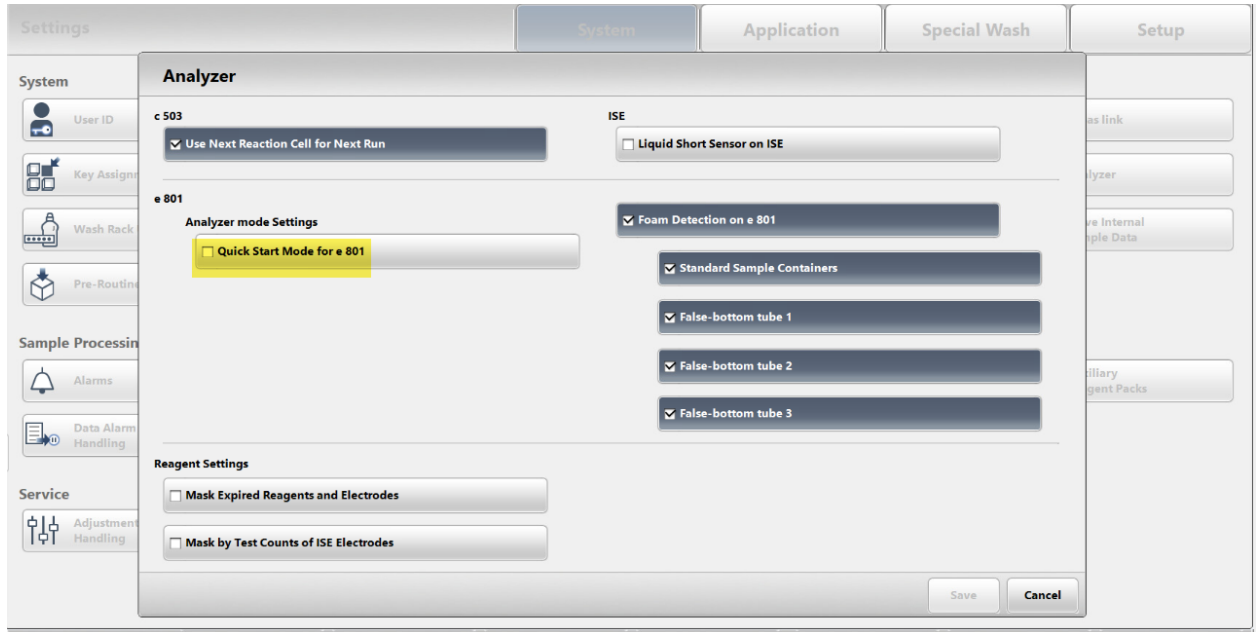
1.1 cobas® 8000 modular analyzer series (cobas e 801)

Log on to the system with Administrator access level.
Navigate to Utility - System - Immune Analyzer Settings - Analyzer Mode Settings, and deactivate "Quick Start Mode".



1.2 cobas® pro integrated solutions (cobas e 801)

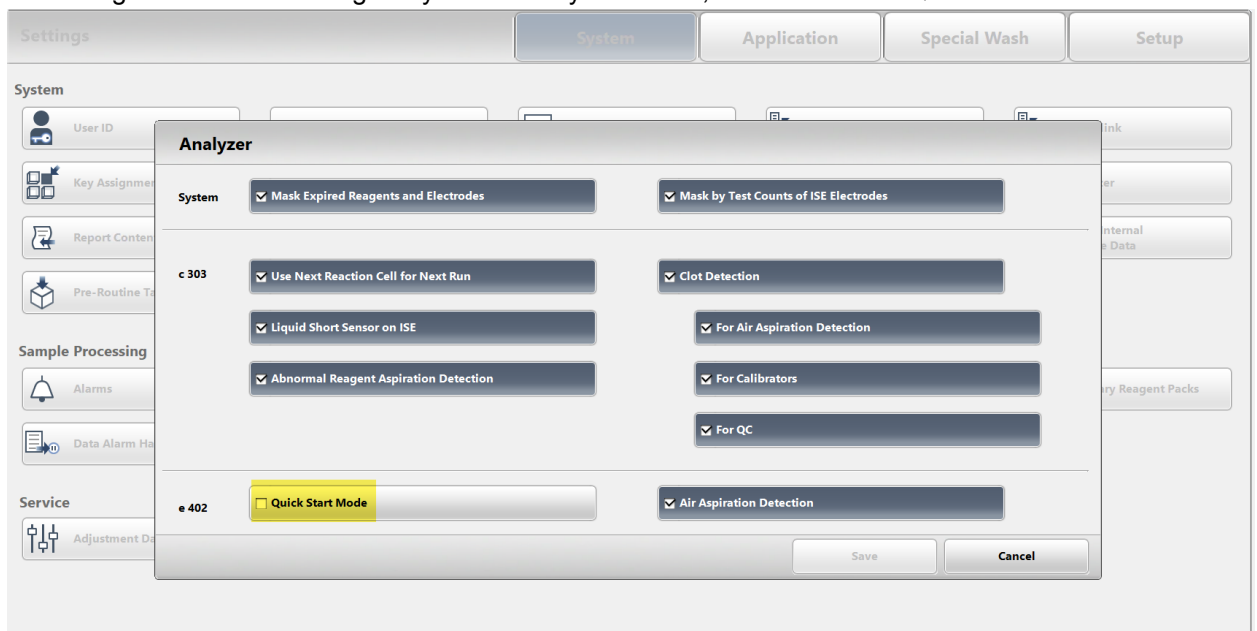
Log on to the system with Administrator access level.
Navigate to Menu - Settings - System - Analyzer - e801 - Analyzer Mode Settings, and deactivate "Quick Start Mode".



1.3 cobas® pure integrated solutions (cobas e 402)

Log on to the system with Administrator access level.

Navigate to Menu- Settings - System - Analyzer - e402, and deactivate “Quick Start Mode”.



2. With activated Quick Start Mode, additional software maintenance actions have to be performed under certain conditions:

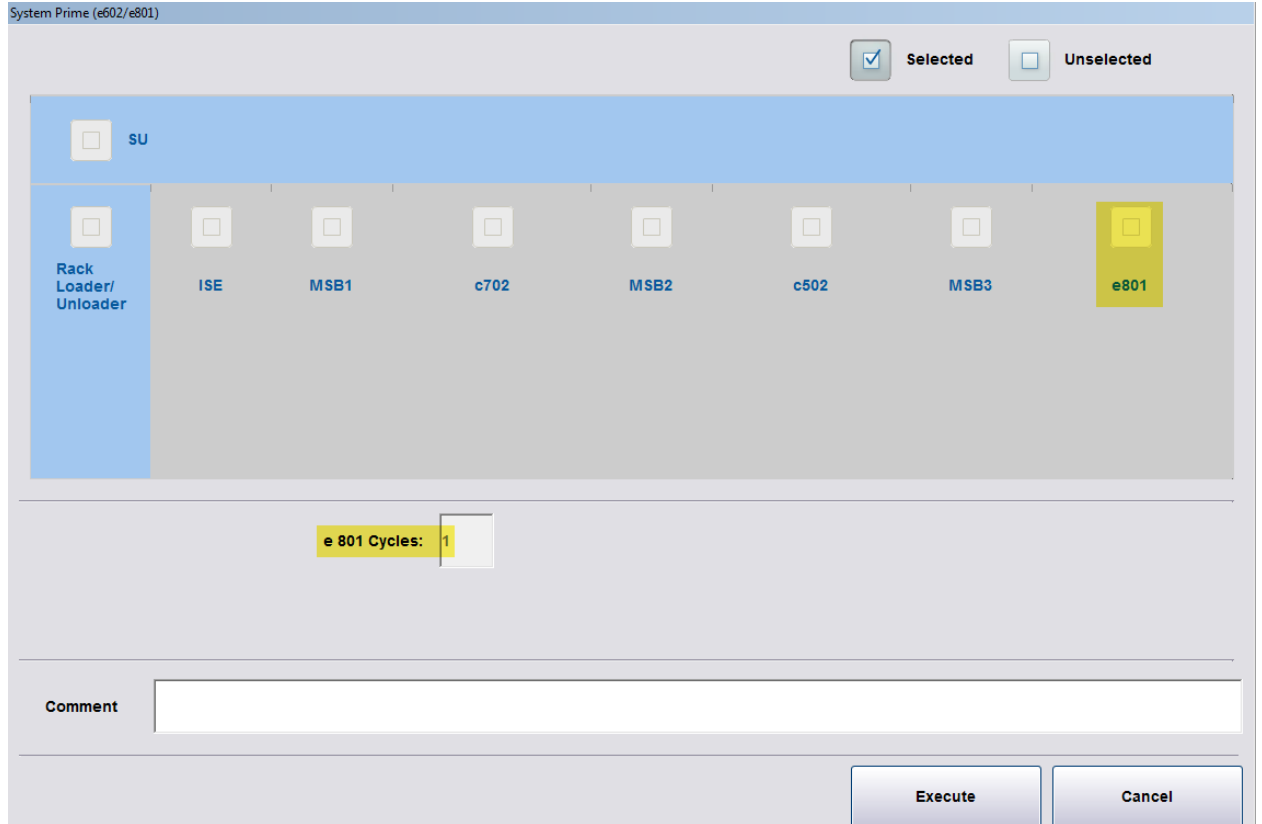
2.1 cobas® 8000 modular analyzer series (cobas e 801)

If one of the following maintenance actions was performed,

- [29] Pre-wash Sipper Rinse
- [26] Liquid Flow Cleaning (options: PreWash and All)
- [31] Finalization
- [17] System Wash (if e 801 is selected)

one cycle of the maintenance action [37] System Prime (e 602/e 801) is required prior to starting a run.

Workplace		Reagent		Calibration		QC		Utility		Overview	
System		Maintenance		Application		Special Wash		System Configuration			
No.	Maintenance Type	No.	Module	Maintenance	Date/Time						
1	Maintenance	25	8	MC Exchange							
2	Check	26	8	Liquid Flow Cleaning							
3		27	8	Inventory Update	09/04/2018 10:40:04						
4	Daily manual cleaning	28	1	ISE System Wash							
5	Weekly manual maintenance c702-c502	29	8	Pre-wash Sipper Rinse							
6	Daily START pipe	30	8	Pre-wash Sipper Air Purge							
7	2-weekly maintenance e801	31	8	Finalization	07/05/2018 08:26:51						
8	Monthly manual maintenance	32	8	Empty PC/CC Reservoir							
9	2-Monthly maintenance ISE only	33									
10	As needed	34									
11	Daily START	35	8	Assay Cup Discarding							
12	Weekly START	36	8	System Air Purge (e602/e801)							
13	Weekly END	37	8	System Prime (e602/e801)	19/02/2018 11:45:26						
14	Finalization	38									
15	Ext. power ON	39									
16	Training	40									
17	Photometer	41									
18		42									
19		43									
20	Service	44									



2.2 cobas® pro integrated solutions (cobas e 801)

If one of the following software maintenance actions was performed,

- [29] Rinse Pre-wash Sipper Flow Path
- [26] Wash Sippers Flow Paths (options: Pre-Wash and All)
- [31] Finalization
- [17] System Wash (if e 801 is selected)

one cycle of the software maintenance action [37] Prime System Reagents Flow Paths (**e** 801) is required prior to starting a run.

Maintenance		SSU	SB	ISE	c 503	e 801	Action	Date
1	User Maintenance					●	31 Finalization	2021/02/25 14:12:06
2	Checks					●	32 Empty ProCell and CleanCell Cups	2021/01/27 14:18:29
3							33	
4	Pipes						34	
5						●	35 Remove AssayCups from Incubator	
6							36	
7						●	37 Prime System Reagents Flow Paths (e 801)	2021/04/15 16:01:45
8							38	
9				●	●		39 Replace Electrodes	2021/02/24 09:52:10
10							40 Format Storage Media	
11		●					41 Clean Water Container Manually	2021/01/27 15:36:00
12				●	●		42 Replace Probe	
13					●		43 Start Water Bath Circulation	2021/02/22 14:57:05
14	Preventive Maintenance	●					44 Draining Degasser Tank	2021/02/25 14:26:49
15	Service					●	45 Photometer Unit Maintenance	2021/02/23 14:01:21

Prime System Reagents Flow Paths (e 801)

[Details](#)

Cycles: 1

Comment on Report:

[Perform](#) [Cancel](#)

2.3 cobas® pure integrated solutions (cobas e 402)

If one of the following software maintenance actions was performed,

- [23] Rinse Pre-wash Sipper Flow Path
- [20] Wash Sippers Flow Paths (options: Pre-Wash and All)
- [24] Finalization
- [13] System Wash (if e 801 is selected)

two cycles of the software maintenance action [6] Reagent Flow Path Prime selecting the option „All“ are required prior to starting a run.

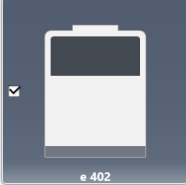
Maintenance

No.	Type	No.	e 402	SSU	c 303	Action	Date
1	User Maintenance	1	●	●	●	Reset	05/08/2020 06:17:14
2	Checks	2	●	●	●	Reset Transport Lines	28/07/2020 18:26:00
3	Pipes	3			●	Cell Blank Measurement	03/08/2020 11:06:17
4		4			●	Exchange Incubation Bath Water	05/08/2020 06:26:29
5		5	●		●	Air Purge	06/08/2020 04:22:30
6		6	●	●	●	Reagent Flow Path Prime	06/08/2020 10:15:07
7		7			●	Prime Wash Solutions Flow Paths	05/08/2020 06:56:51
8		8			●	Clean Incubation Bath Manually	
9		9			●	Replace Reaction Cells	
10		10			●	Replace Photometer Lamp	
11		11				Back up System Configuration	
12		12				Test Counter	
13	Preventive Maintenance	13	●		●	System Wash	03/08/2020 04:59:14
14	Service	14			●	Sample Probe Wash	
15		15	●			Reagent Probe Wash	

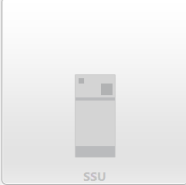
Monitor Status Close

Maintenance

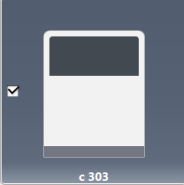
Reagent Flow Path Prime



e 402



SSU



c 303

e 402 Flow Paths: All

e 402 Cycles:

c 303 Flow Paths: All

c 303 Cycles:

Comment on Report:

Perform Cancel